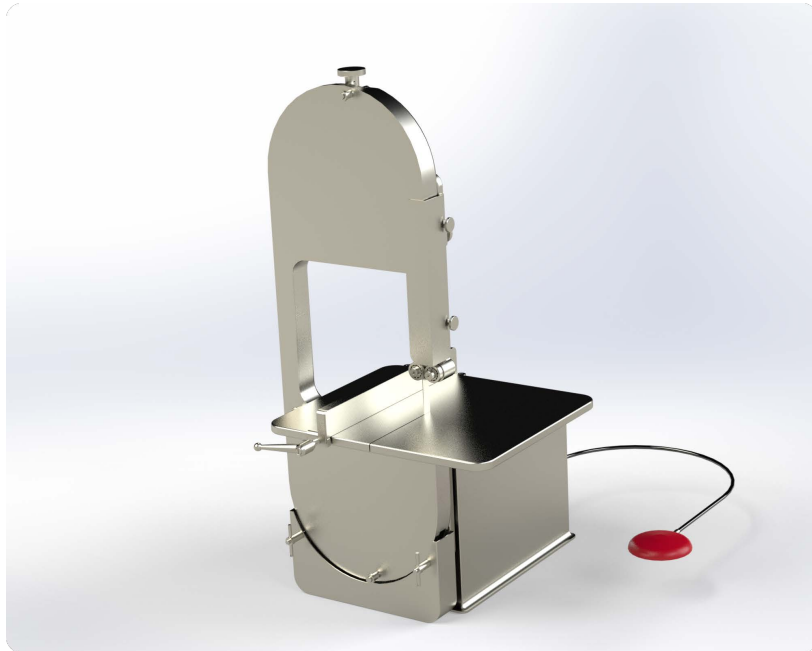




biocut systems
bioprocessing simplified



STERILCUT® S28 BIOLOGIC BAND SAW

Specifications

- Overall Dimensions: 22" W x 17" D x 32" H
- Cutting Area: 8" W x 8" D
- Overall Weight: 160lbs
- Maximum Removable Part Weight: 25lbs
- Exterior Construction: Stainless Steel, PEEK
- Motor:
 - 120VAC, 1.5AMP
 - 0.5 Horse Power
 - 3-Phase

Benefits



Clean-Room
Compatible



Easy Set Up and
Tear Down



Stainless Steel
Construction



Minimal and
Interchangeable
Parts

Options

- Ambidextrous Model Available
- Emergency Stop
- Dual Foot Peddle
- Table / Mobile Cart